



THE UV TRENDSETTERS



JK | LICHT

Ergoline sonnenENGEL *soltron* BERMUDA **GOLD**



TREND 0.3

A NICE, SAFE TAN



The trend towards 0.3 is continuing, and is also challenging manufacturers to create innovative and competent solutions. JK-Licht provides a perfect solution for converting sunbeds with the Trend Programme.

Effective as of 23 July 2007, the Working Group of the European Market Supervisory Authority ruled that only sunbeds with an irradiance of 0.3 W/m² would be permitted. This value corresponds to the UV radiation at 12 midday at the equator. Anyone who wishes to certify their studio after 1 August 2008 must have their sunbeds converted to 0.3. And this is where the problems start: EVERY sunbed requires its own individual 0.3 solution. There is NO uniform 0.3 tube that can be inserted into every sunbed. And changing the UV lamp alone is not enough either! The entire device

must be adapted to the 0.3 norm. That means: the device must be measured and filter glasses, EDP solutions and lamps determined. The same thing must be done for every sunbed!

Providers such as JK-Licht have got it good. The close proximity to the development center of the market leaders JK guarantees fast information flow. All JK sunbeds made since 1996 are currently being measured and equipped with the JK Trend Programme. In other words, each sunbed is being set to the 0.3 norm using Trend: lamps, filter glasses and software. And

all variables, such as acryl bases, tube distance from the body and UV lamp cooling are taken into account in this measuring procedure. This optimizes the tanning performance of each sunbed according to the 0.3 norm and minimizes the risk of sunburn.

JK-Licht has established itself as a renowned competent partner in the field of UV. Individual and comprehensive advice from a trained team is absolutely indispensable, especially with such a wide range of products as the sunbeds available from JK.

A 0.3 configurator from the JK-Licht homepage enables anyone who is interested to find out quickly and easily about the individual possible ways to convert JK sunbeds.

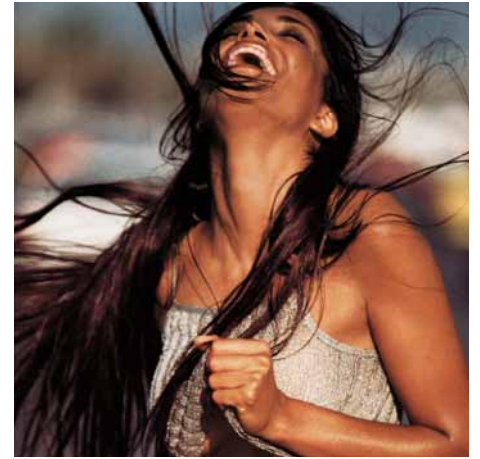


Art. No.	Trend lamps Ergoline	Watt	UVA Watt	UVB %	UVA W/m ²	Recomm. tanning time type 3	Life	Length mm
1503663-00	Ergoline Trend E9	8	1		15	5,5	500	310
1503760-00	Ergoline Trend E9	8	1		15	6,5	500	335
1504474-00	Ergoline Trend E10	8	1		15	6	500	252
12832-02	Ergoline Trend E1	25	6	1,0 %	90	41	500	520
1004617-00	Ergoline Trend E6	40	15	1,0 %	100	35	650	600
1004343-00	Ergoline Trend R E3	100	30	0,6%	200	28	650	1760
1003886-00	Ergoline Trend R E6+	100	30	0,8%	200	22	650	1760
1003890-00	Ergoline Trend R E2	100	30	0,8%	200	22	650	1760
1007020-00	Ergoline Trend R E7	100	30	0,4%	190	31	650	1760
1504505-00	Ergoline Trend R E10	100	30	0,8%	190	18	800	1760
1504535-00	Ergoline Trend R E13	100	30	0,6%	210	24	800	1760
1504537-00	Ergoline Trend R E13 (2 m)	100	28	0,6%	190	22	800	2000
1004511-00	Ergoline Trend R E4	120	35	0,4%	250	25	650	2000
1004325-00	Ergoline Trend R E6	120	35	0,8%	250	14	650	2000
1504931-00	Ergoline Trend R E14	120	35	1,3%	240	11	800	2000
1004409-01	Ergoline Trend R E1	160	36	1,0%	260	14	650	1760
1005342-00	Ergoline Trend R E5	160	36	0,6%	280	18	800	1760
1504250-00	Ergoline Trend R E5 80-200 W	160	36	0,6%	280	18	650	1760
1003883-00	Ergoline Trend R E6	160	36	0,8%	280	15	800	1760
1003882-00	Ergoline Trend R E6 80-200 W	160	36	0,8%	280	15	650	1760
1005897-00	Ergoline Trend R E7	160	36	0,4%	280	23	800	1760
1504501-00	Ergoline Trend R E10	160	36	0,6%	280	21	800	1760
1504503-00	Ergoline Trend R E11	160	36	0,5%	280	18	800	1760
1504553-00	Ergoline Trend R E13	160	36	0,4%	280	22	800	1760
1005900-00	Ergoline Trend R E4 80-200 W	180	44	0,6%	280	18	800	2000
1004108-00	Ergoline Trend R E6+	180	50	0,5%	300	18	800	2000
1003888-00	Ergoline Trend R E6	180	36	0,8%	280	14	800	2000
1004513-00	Ergoline Trend R E7	180	42	0,5%	280	18	800	2000

Art. No.	Trend lamps Soltron	Watt	UVA Watt	UVB %	UVA W/m ²	Recomm. tanning time type 3	Life	Length mm
1503665-00	Soltron Trend E9	8	1		15	5,5	500	310
1503836-00	Soltron Trend E9	8	1		15	6,5	500	335
1504475-00	Soltron Trend E10	8	1		20	4,5	500	258
1002029-02	Soltron Trend E1	25	6	1,0 %	90	41	500	520
1004344-00	Soltron Trend R E3	100	30	0,6%	200	28	650	1760
1003887-00	Soltron Trend R E6+	100	30	0,8%	200	22	650	1760
1003891-00	Soltron Trend R E2	100	30	0,8%	200	20	650	1760
1007019-00	Soltron Trend R E7	100	30	0,4%	190	32	650	1760
1504506-00	Soltron Trend R E10	100	30	0,8%	190	18	800	1760
1504536-00	Soltron Trend R E13	100	30	0,6%	210	24	800	1760
1504538-00	Soltron Trend R E13 (2 m)	100	28	0,6%	190	22	800	2000
1004520-00	Soltron Trend R E4	120	35	0,4%	250	20	650	2000
1004326-00	Soltron Trend R E6	120	30	0,7%	200	22	650	2000
1504932-00	Soltron Trend R E14	120	35	1,3%	240	11	800	2000
1004410-00	Soltron Trend R E1	160	36	1,0%	260	14	650	1760
1005343-00	Soltron Trend R E5	160	36	0,6%	280	18	800	1760
1504251-00	Soltron Trend R E5 80-200 W	160	36	0,6%	280	18	650	1760
1003885-00	Soltron Trend R E6	160	36	0,8%	280	15	800	1760
1003884-00	Soltron Trend R E6 80-200 W	160	36	0,8%	280	15	650	1760
1005898-00	Soltron Trend R E7	160	36	0,4%	280	23	800	1760
1504502-00	Soltron Trend R E10	160	36	0,6%	280	21	800	1760
1504504-00	Soltron Trend R E11	160	36	0,5%	280	18	800	1760
1504554-00	Soltron Trend R E13	160	36	0,4%	280	22	800	1760
1005899-00	Soltron Trend R E4 80-200W	180	44	0,6%	280	18	800	2000
1004109-00	Soltron Trend R E6+	180	50	0,5%	300	18	800	2000
1003889-00	Soltron Trend R E6	180	36	0,8%	280	14	800	2000
1004512-00	Soltron Trend R E7	180	42	0,5%	280	18	800	2000

*Just in connection with Dynamic Power equipment





Art.-Nr.	Filter glasses	Size
1003896-01	VIT Max 311S Trend	263 x 206 mm
1003894-01	VIT Max 311S Trend	315 x 264 mm
1005229-01	VIT Max 312H Trend	320 x 264 mm
1005908-00	VIT Max 842H Trend	378 x 205 mm
1005949-00	VIT MAX 842H Trend	315 x 264 mm
1005415-00	VIT MAX 622H Trend	320 x 264 mm
1503241-00	Ultra 852H Trend	514 x 264 mm
1005686-01	Ultra 852H Trend	264 x 264 mm
1005687-01	Ultra 852H Trend	320 x 264 mm
1003892-01	Ultra Performance 842H Trend	320 x 264 mm
1003743-01	Ultra Performance 842H Trend	320 x 198 mm
1005802-00	Ultra Performance 842H Trend	320 x 264 mm
1003907-00	Ultra Performance 841	320 x 264 mm
1503263-00	Open Sun A.R.T. 324	230 x 230 mm
1003893-00	Open Sun A.R.T. 550	230 x 230 mm

JK-Licht GmbH

Köhlershohner Strasse • 53578 Windhagen

Tel. +49(0)2224-818-600 • Fax +49(0)2224-818-615 • E-mail: info@jk-licht.de • Internet: www.jk-licht.de